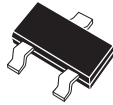


CMPT2369
NPN SILICON TRANSISTOR



SOT-23 CASE

CentralTM

Semiconductor Corp.

DESCRIPTION:

The CENTRAL SEMICONDUCTOR CMPT2369 type is an NPN silicon transistor manufactured by the epitaxial planar process, epoxy molded in a surface mount package, designed for small signal general purpose and high speed switching applications.

MARKING CODE: C1J

MAXIMUM RATINGS: ($T_A=25^\circ\text{C}$)

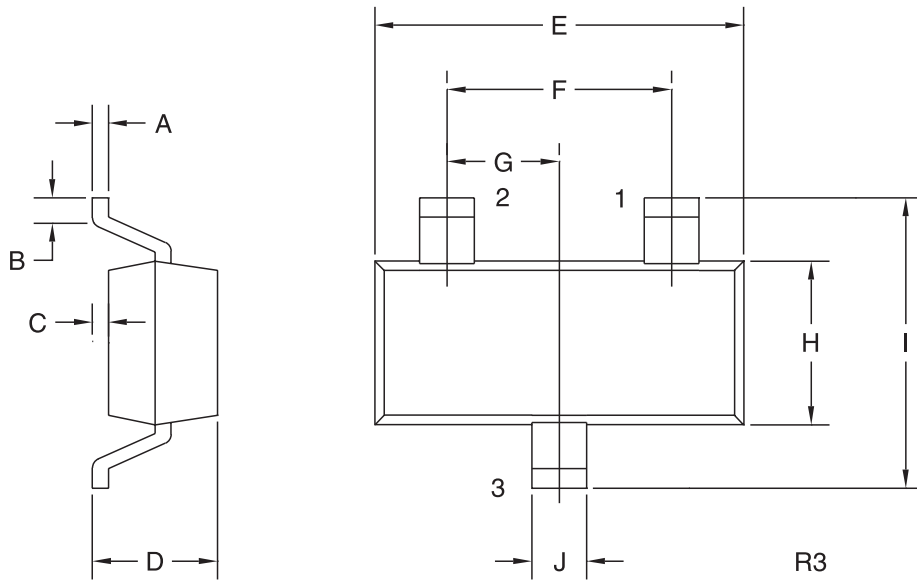
	SYMBOL		UNITS
Collector-Base Voltage	V_{CBO}	40	V
Collector-Emitter Voltage	V_{CES}	40	V
Collector-Emitter Voltage	V_{CEO}	15	V
Emitter-Base Voltage	V_{EBO}	4.5	V
Continuous Collector Current	I_C	500	mA
Power Dissipation	P_D	350	mW
Operating and Storage			
Junction Temperature	T_J, T_{stg}	-65 to +150	$^\circ\text{C}$
Thermal Resistance	θ_{JA}	357	$^\circ\text{C/W}$

ELECTRICAL CHARACTERISTICS: ($T_A=25^\circ\text{C}$ unless otherwise noted)

SYMBOL	TEST CONDITIONS	MIN	MAX	UNITS
I_{CBO}	$V_{CB}=20\text{V}$		0.4	μA
I_{CBO}	$V_{CB}=20\text{V}, T_A=125^\circ\text{C}$		30	μA
BV_{CBO}	$I_C=10\mu\text{A}$	40		V
BV_{CES}	$I_C=10\mu\text{A}$	40		V
BV_{CEO}	$I_C=10\text{mA}$	15		V
BV_{EBO}	$I_E=10\mu\text{A}$	4.5		V
$V_{CE(SAT)}$	$I_C=10\text{mA}, I_B=1.0\text{mA}$		0.25	V
$V_{BE(SAT)}$	$I_C=10\text{mA}, I_B=1.0\text{mA}$	0.7	0.85	V
h_{FE}	$V_{CE}=1.0\text{V}, I_C=10\text{mA}$	40	120	
h_{FE}	$V_{CE}=2.0\text{V}, I_C=100\text{mA}$	20		
C_{ob}	$V_{CB}=5.0\text{V}, I_E=0, f=1.0\text{MHz}$		4.0	pF
f_T	$V_{CE}=10\text{V}, I_C=10\text{mA}, f=100\text{MHz}$	500		MHz
t_s	$V_{CC}=3.0\text{V}, I_C=I_{B1}=I_{B2}=10\text{mA}$		13	ns
t_{on}	$V_{CC}=3.0\text{V}, I_C=10\text{mA}, I_{B1}=3.0\text{mA}$		12	ns
t_{off}	$V_{CC}=3.0\text{V}, I_C=10\text{mA}, I_{B1}=3.0\text{mA}, I_{B2}=1.5\text{mA}$		18	ns

R4 (26-September 2002)

SOT-23 CASE - MECHANICAL OUTLINE



LEAD CODE:

- 1) BASE
- 2) EMITTER
- 3) COLLECTOR

MARKING CODE: C1J

SYMBOL	DIMENSIONS			
	INCHES		MILLIMETERS	
	MIN	MAX	MIN	MAX
A	0.003	0.007	0.08	0.18
B	0.006	-	0.15	-
C	-	0.005	-	0.13
D	0.035	0.043	0.89	1.09
E	0.110	0.120	2.80	3.05
F	0.075		1.90	
G	0.037		0.95	
H	0.047	0.055	1.19	1.40
I	0.083	0.098	2.10	2.49
J	0.014	0.020	0.35	0.50

SOT-23 (REV: R3)